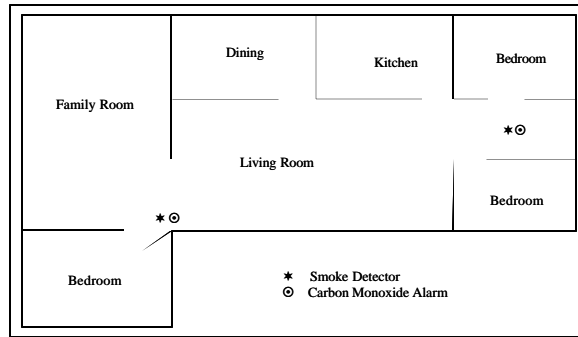


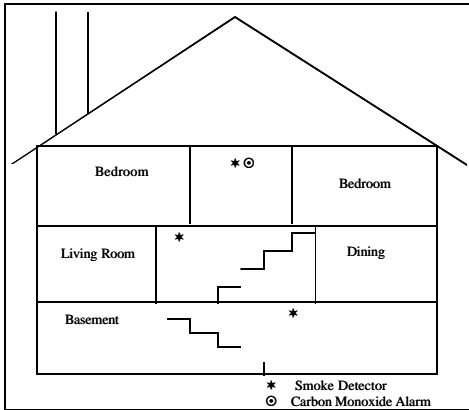
Example of smoke detector/carbon monoxide alarm placement with one sleeping area  
(From NFPA 74 NFPA 720)

**Figure 1**



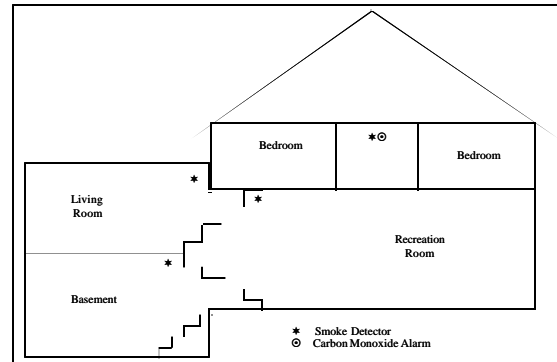
Example of smoke detector/carbon monoxide alarm placement with more than one sleeping area  
(From NFPA 74 NFPA 720)

**Figure 2**



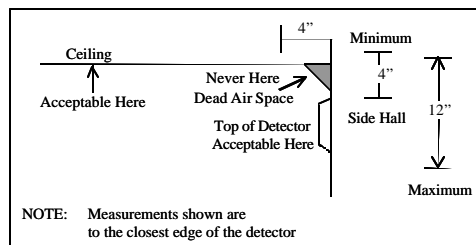
Example of proper mounting of smoke detector/carbon monoxide alarms in standard dwelling  
(From NFPA 74 NFPA 720)

**Figure 3**



Example of proper mounting of smoke detector/carbon monoxide alarms in multi-level dwelling  
(From NFPA 74 NFPA 720)

**Figure 4**



Example of proper mounting for smoke detector  
(From NFPA 74 NFPA 720)

**Figure 5**