

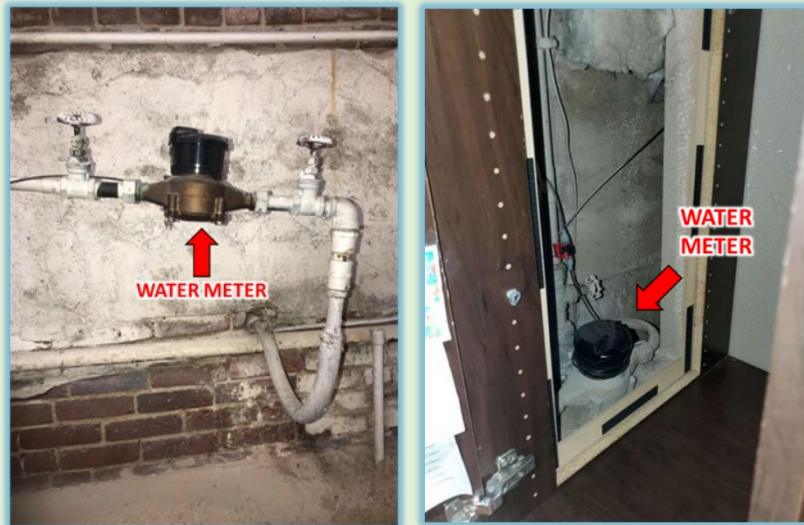
[Versión en español](#)

How to Identify your Water Service Line Material

You will need a coin or key and a refrigerator magnet to perform the scratch test described below:

Step 1: Find your water meter.

For most buildings, the water meter is in the basement or lower level along the front wall that faces the street. If your basement or lower level is finished, the meter may be located behind a wall.



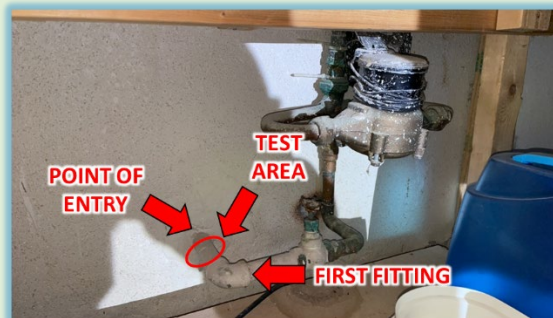
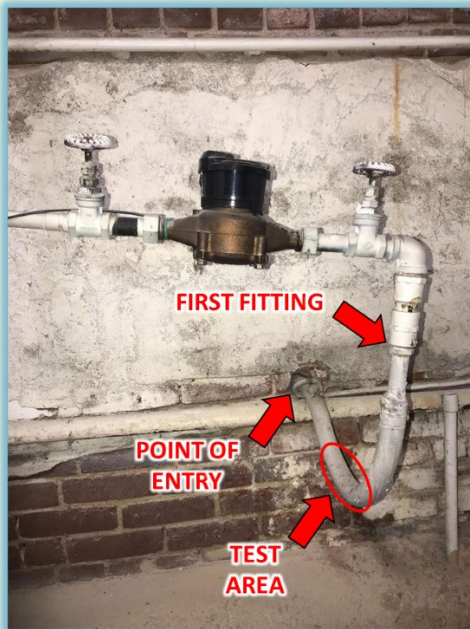
Step 2: Locate the service line point of entry.

From your water meter, trace the pipe to where it enters the building, which will be either through an exterior wall or the floor.



Step 3: Identify the test area on the service line.

The portion of the service line that needs to be tested is **between** the **point of entry** and the **first fitting before** the meter.



If the service line is covered or wrapped, expose a small area of the pipe.



If the pipe is painted or corroded, use sandpaper to expose the metal first.

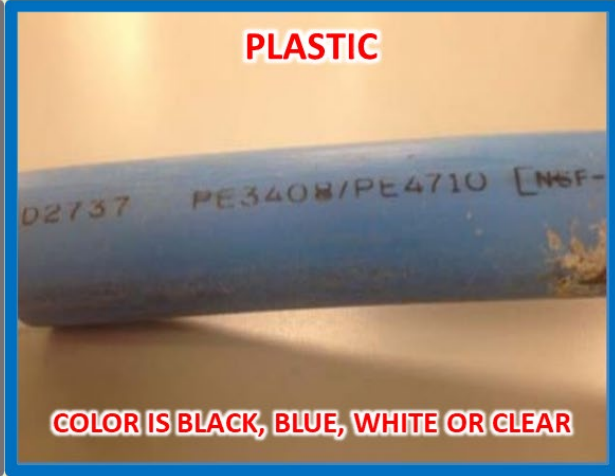


Carefully scratch the pipe (like a lottery ticket) with a coin or key. **Do not use** a knife or other sharp tool to avoid puncturing the pipe.

Touch the magnet to the pipe and note if the magnet sticks.

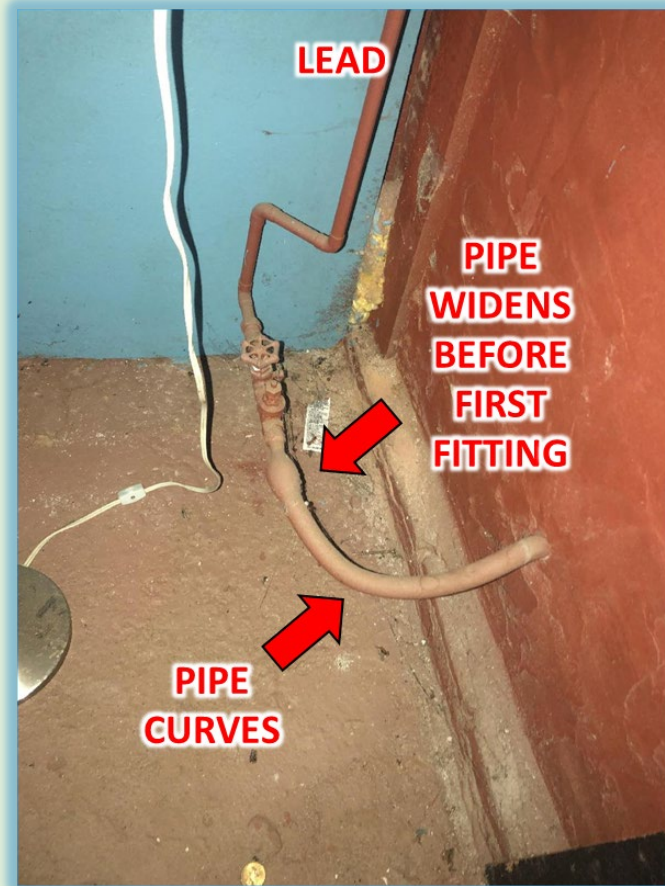
Step 4: Identify the service line material based on the table and matrix below:

PIPE MATERIAL	SCRATCH COLOR	DOES MAGNET STICK?
LEAD	SHINY SILVER	NO
COPPER	ORANGE (PENNY)	NO
GALVANIZED STEEL	DULL GRAY	YES
PLASTIC	N/A	NO

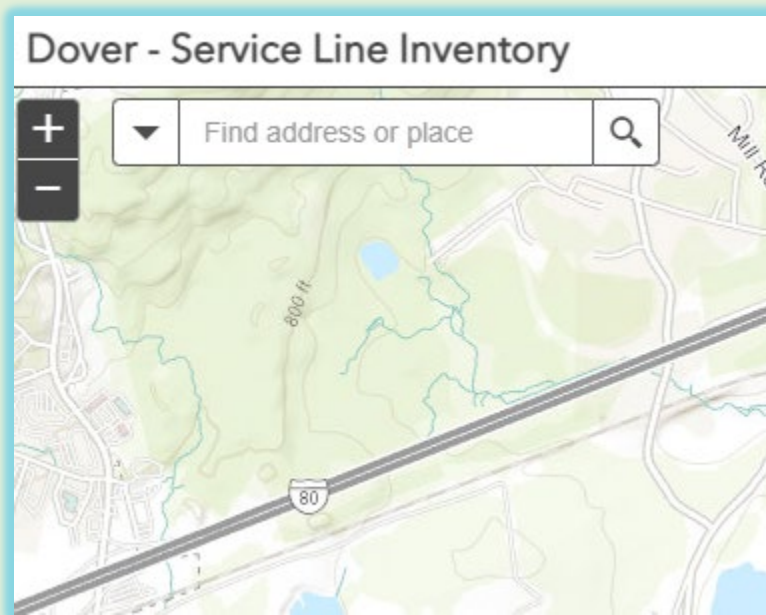


Examples of characteristics that would identify a lead service line:

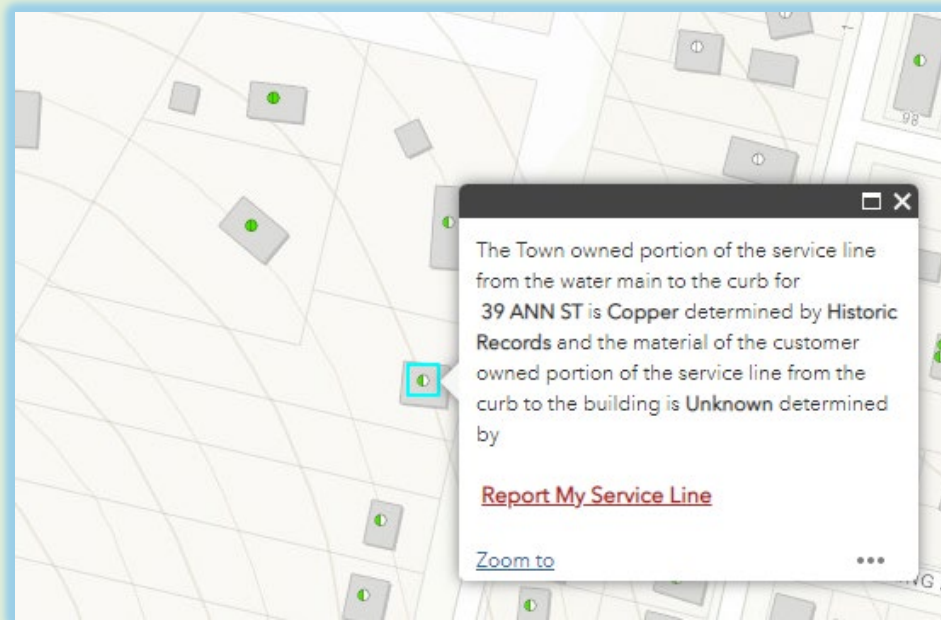




Step 5: Go to the [service line inventory web application](#) and enter the address of the building for which the scratch test was performed.



Step 6: On the popup that describes the service line materials, click on “Report My Service Line Material”.



Step 7: Fill out the form and upload a clear photo that shows the service line **point of entry** through the wall or floor and **scratch test location**. Upload additional photos if needed.

A screenshot of a web form titled "Dover - Report My Service Line Material". The form is part of the Town of Dover website, as indicated by the header which includes the town's logo and name. The form contains the following elements:

- Header: "WELCOME TO THE TOWN OF DOVER MORRIS COUNTY, NJ"
- Title: "Dover - Report My Service Line Material"
- Link: "[How do I identify my service line material? Click here for instructions.](#)"
- Text: "It is recommended that you complete this survey on a phone or a tablet since you are required to take and upload a photograph."
- Text: "Questions with * are required"
- Form field: "Service Address*" with an empty text input box.
- Form field: "Your Name*" with an empty text input box.

Examples of photos that clearly show the **point of entry** and test location:

